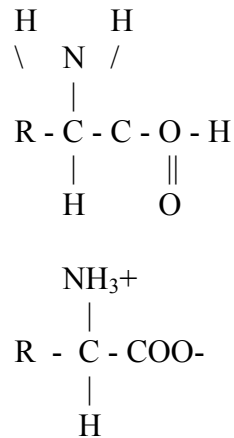
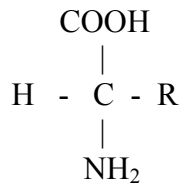


PROTEIN

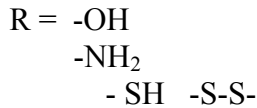
Carbon
Hydrogen
Oxygen
Nitrogen
sometimes
Sulfur
Phosphorus
Stabilized
Water shell
Electrical charge



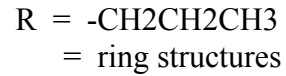
AMINO ACIDS



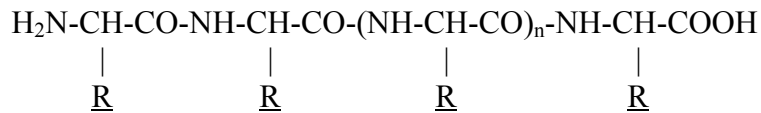
HYDROPHILIC AMINO ACIDS



HYDROPHOBIC AMINO ACIDS



PRIMARY STRUCTURE



SECONDARY STRUCTURE - coiling of long peptide chains into springlike structure. Alpha helix is common.

TERTIARY AND QUATERNARY STRUCTURE - folding of helix on itself